



Zoning Map

Legend

Key Map Elements

- Special Regulation Areas
- Potential Annexation Areas
- City Limits

Recreation Zones

- Bear Creek Design District (BCDD2)
- Urban Recreation (UR)

Residential Zones

- Semi-Rural (RA-5) & Single-Family Constrained Zones (R-1, R-2, & R-3)
- Single-Family Urban Zones (R-4, R-5, R-6, RIN, & R-8)
- Multi-Family Urban Zones (R-12, R-18, R20, R-30), Bear Creek Design District (BCDD1), Marymoor Design District (MDD3), & Northeast Design District (NDD1)

Commercial/Industrial Zones

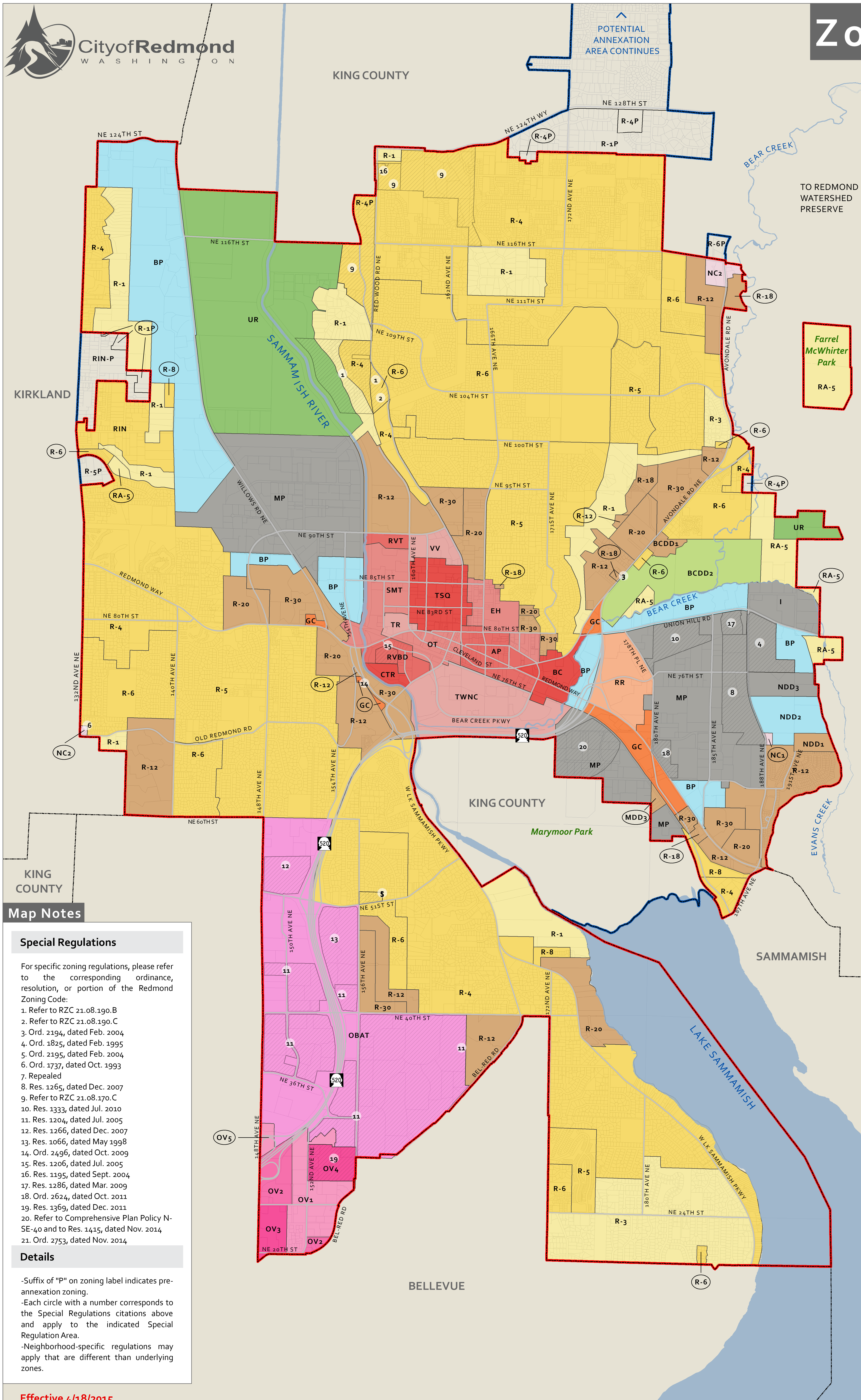
- Neighborhood Commercial (NC1 & NC2)
- Regional Retail Design District (RR)
- General Commercial (GC)
- Business Park (BP), & Northeast Design District (NDD2)
- Industry (I), Manufacturing Park (MP), & Northeast Design District (NDD3)

Downtown Zones

- Town Square (TSO), Carter (CTR), East Hill (EH), Bear Creek (BC), Trestle (TR), Valley View (VV), Anderson Park (AP), Old Town (OT), River Bend (RVBD), Sammamish Trail (SMT), Town Center (TWNC), & River Trail (RVT)

Overlake Zones

- Overlake Business and Advanced Technology (OBAT)
- Overlake Village (OV1, OV2, OV3, OV4, & OV5)

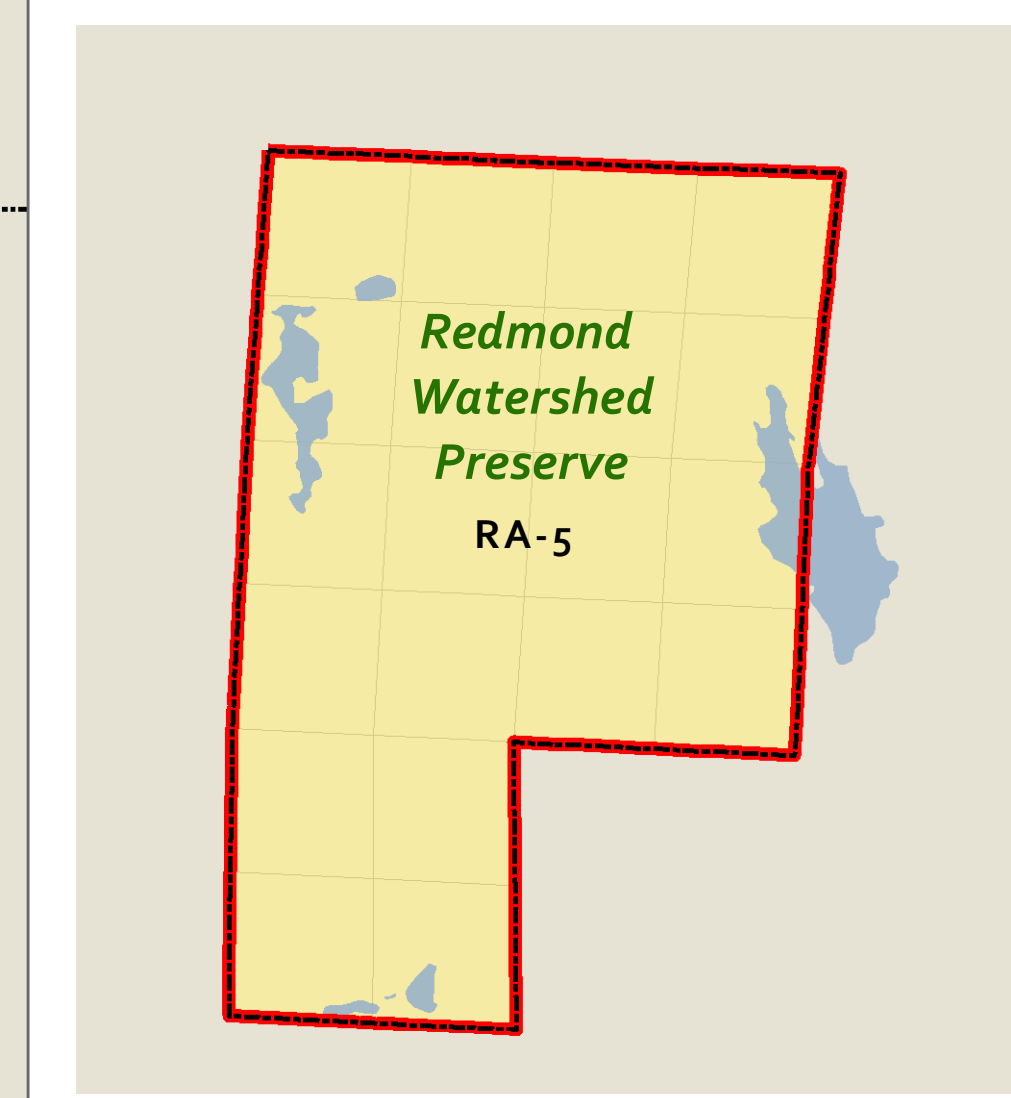


TO REDMOND WATERSHED PRESERVE

Farrel McWhirter Park
RA-5

Marymoor Park

Watershed

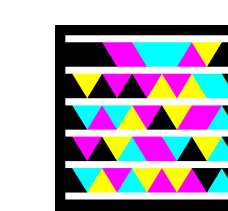


Notice

This map is a general representation. The City of Redmond does not warrant precise boundaries. Maps may not fully reflect the most recent policy updates. Please consult with Planning and Community Development for zoning verification or specific zoning questions.

Learn More

For information on Redmond's zoning regulations, check out Redmond.gov/ZoningCode.



Map Notes

Special Regulations

For specific zoning regulations, please refer to the corresponding ordinance, resolution, or portion of the Redmond Zoning Code:

- Refer to RZC 21.08.190.B
- Refer to RZC 21.08.190.C
- Ord. 2194, dated Feb. 2004
- Ord. 1825, dated Feb. 1995
- Ord. 2195, dated Feb. 2004
- Ord. 1737, dated Oct. 1993
- Repealed
- Res. 1265, dated Dec. 2007
- Refer to RZC 21.08.170.C
- Res. 1333, dated Jul. 2010
- Res. 1204, dated Jul. 2005
- Res. 1266, dated Dec. 2007
- Res. 1066, dated May 1998
- Ord. 2496, dated Oct. 2009
- Res. 1206, dated Jul. 2005
- Res. 1195, dated Sept. 2004
- Res. 1286, dated Mar. 2009
- Ord. 2624, dated Oct. 2011
- Res. 1369, dated Dec. 2011
- Refer to Comprehensive Plan Policy N-SE-40 and to Res. 1415, dated Nov. 2014
- Ord. 2753, dated Nov. 2014

Details

- Suffix of "P" on zoning label indicates pre-annexation zoning.
- Each circle with a number corresponds to the Special Regulations citations above and apply to the indicated Special Regulation Area.
- Neighborhood-specific regulations may apply that are different than underlying zones.